

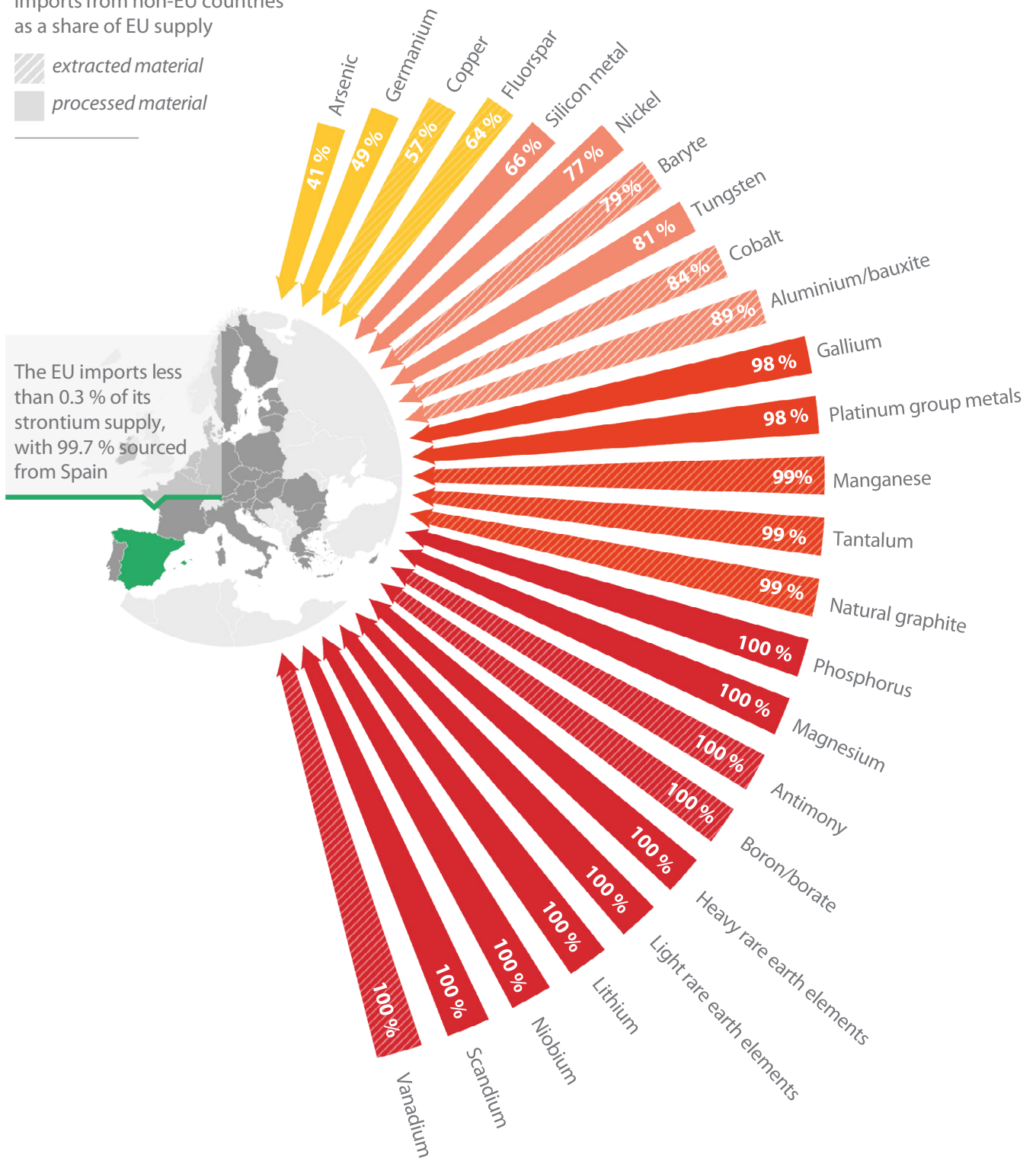


# EU's dependency on imports of critical raw materials

Imports from non-EU countries as a share of EU supply

 extracted material  
 processed material



*Note:* Import dependency is the percentage of CRMs supplied from outside the EU, indicating the EU's reliance on imports to meet demand. Higher values reflect greater vulnerability to external supply disruptions.

*Source:* ECA, based on Commission information (2016-2020).